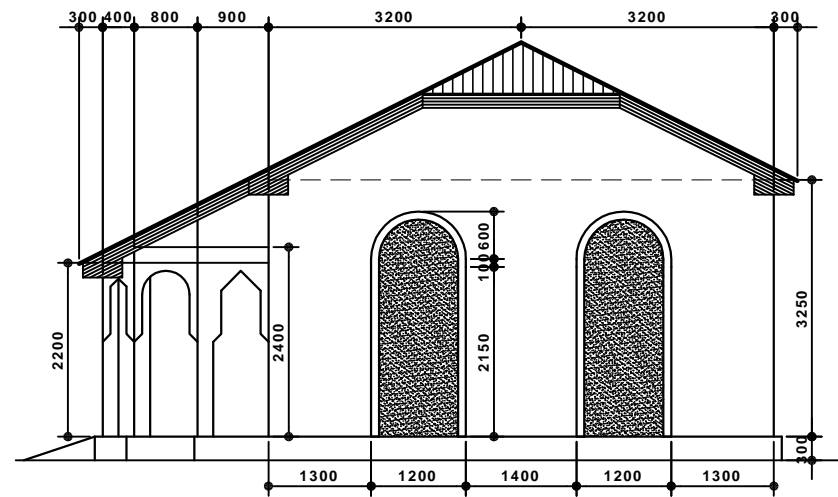
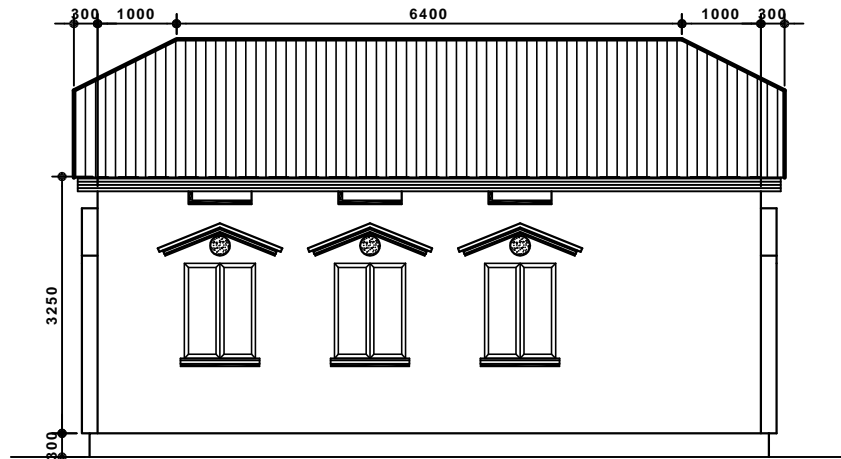


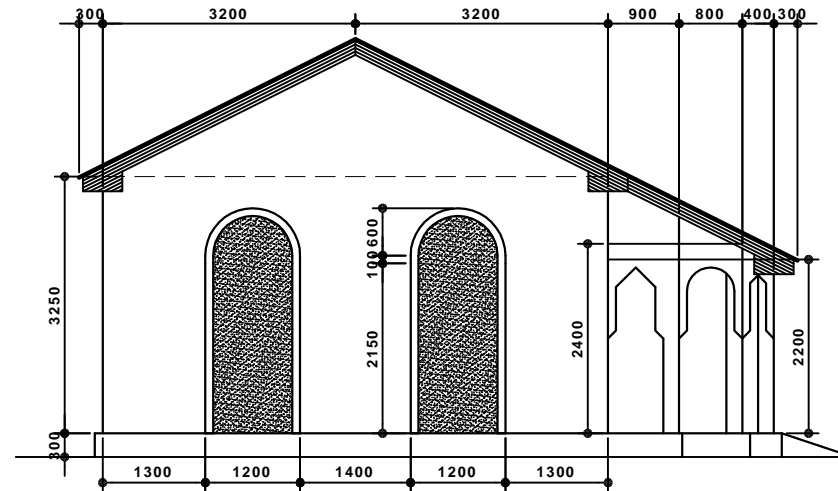
**SINGLE CRM: FRONT VIEW / 1:100**



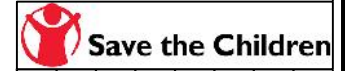
**SINGLE CRM: RIGHT VIEW / 1:100**



**BACK SIDE VIEW / 1:100**



**LEFT SIDE VIEW / 1:100**



1	PROJECT	DESIGN OF A SINGLE CRM SCHOOL BLOCK
2	LOCATION	DAWACO VILLAGE / SANAG / PUNTLAND
3	FUNDED BY	SCI / GAROWE OFFICE / PUNTLAND SOMALIA
4	OWNER	DAWACO PRIMARY SCHOOL / DAWACO VILLAGE
5	DRAWING	ELEVATIONS / SCALE= 1:100
6	DESIGNED BY	ENGINEER A/AZIZ OSMAN KITEH
7	DRAWN BY	IDEM / TEL. 0907740100
8	DATE	JUNE 14 / 2020

**DAWACO PRIMARY SCHOOL**  
**NEW SINGLE CRM BLOCK**  
**DAWACO VILLAGE / SANAG / PUNTLAND**